

# LEVEL 5

## Complete Requirements

### Repertoire






Three pieces: one from the Baroque Period, one from the Classical Period, one from the Romantic Period or Twentieth Century. Two must be memorized.

Anthologies	
Publisher	
Alfred	Magrath, J.: Masterpieces with Flair!, Books 1 and 2 (not Kabalevsky Sonatina)
FJH	Faber: The Developing Artist, Piano Literature, Books 3 and 4
Harris	Celebration Series Perspectives: Piano Repertoire, Levels 4 and 5 Piano Etudes, Level 5
Kjos	Snell, K.: Piano Repertoire, Level 5 <ul style="list-style-type: none"> <li>• Baroque and Classical</li> <li>• Romantic and 20<sup>th</sup> Century</li> <li>• Etudes</li> </ul>
Summy-Birchard	Clark, F.: <ul style="list-style-type: none"> <li>• Contemporary Literature, Volumes 5 and 6,</li> <li>• Piano Literature Books 5 and 6</li> </ul>
Additional Examples	
Baroque	Bach, J.S.: <ul style="list-style-type: none"> <li>• <i>Allemande in g minor</i>, BWV 836</li> <li>• <i>Little Prelude in C Major</i>, BWV 939</li> </ul>
Classical	Clementi: Sonatinas, Op.36, Nos. 4 and 5 (3 <sup>rd</sup> movement) Beethoven: <ul style="list-style-type: none"> <li>• Six Ecosaisies WoO 83, Nos. 1, 2, 4 and 5</li> <li>• Bagatelles, Op. 119, Nos. 2, 3 and 4</li> </ul>
Romantic	Burgmuller: 25 Progressive Studies, Op. 100, Nos. 20, 22 and 24 Gurlitt: Six Sonatinas, Op. 54
20 <sup>th</sup> Century	Kabalevsky: <ul style="list-style-type: none"> <li>• 5 Sets of Variations. Op. 51, Nos. 1, 2 and 3</li> <li>• 30 Pieces for Children, Op. 27, Nos. 3, 8, 13, 14, 15, 16, 18 and 19</li> <li>• 24 Pieces for Children, Op.39, Nos. 21, 23 and 24</li> </ul> Bartok: <ul style="list-style-type: none"> <li>• For Children, Book 1, Nos. 10, 13, 21, 24, 26, 27, 28 and 30</li> <li>• For Children, Book 2, Nos. 11, 18, 19, 20 and 21</li> </ul>

## Oral Questions

Questions may be asked about musical terms and signs found in the student's repertoire. In addition, the student should know the style period represented by each piece, as well as one or more facts about the composer. If the repertoire includes pieces in binary, rounded binary or ternary form, the student may be asked to identify the form.

## Technique

<b>Scales</b>	E $\flat$ A $\flat$ E Major f c# harmonic minor	Hands together, legato 3 octaves		$\text{♩} = 80$
<b>Cadences</b>	E $\flat$ A $\flat$ E Major f c# minor	I - IV $6/4$ - I - V $6/5$ - I i - iv $6/4$ - i - V $6/5$ - i		
<b>Chromatic Scale</b>	Beginning on any key.	Hands separately or together, legato 3 octaves		$\text{♩} = 80$
<b>Four-Note Tonic Chord Inversions</b>	E $\flat$ A $\flat$ E Major	Hands together. Root position and inversions. Broken. Up first, then down.		
<b>Arpeggios</b>	E $\flat$ A $\flat$ E Major	Hands together . 3 octaves.		

## Sight Reading

Sight read a short musical example, equal in difficulty to a Level 3 piece.

## Terms and Signs

rondo form    con    con brio    con moto    con spirito  
 largo    tranquillo    vivo    enharmonic    meter  
 articulation    ostinato    double flat ( $\flat\flat$ )    double sharp ( $\sharp\sharp$ )    trill ( $\text{tr}$ ,  $\text{tr}$ )  
 mordent ( $\text{tr}$ )    turn ( $\text{turn}$ )    appoggiatura ( $\text{acc}$ )    rounded binary

## Music Literacy

*The student is responsible for all terms, signs, and concepts from previous levels.*

- Write scales in whole notes using accidentals *or* a key signature. Add triads plus a dominant seventh chord above the appropriate degrees of major scales and label them with Roman numerals (I, ii, iii, IV, V7, vi, vii<sup>o</sup>)  
Keys: C, G, D, A, E, F, Bb, Eb, Ab Major; c, a, d, e, g, b harmonic minor.
- Write or identify key signatures. Keys: C, G, D, A, E, F, Bb, Eb, Ab Major; a, d, e, g, b harmonic minor.
- Write all seven sharps or flats in key signature order on either staff.
- Match Roman numerals with names of primary and secondary triads.
- Write tonic triads in 3 positions, labeling them with the appropriate figured bass.  
Keys: C, G, D, A, F, Bb, Eb, Major

<i>root position</i>	<i>first inversion</i>	<i>second inversion</i>
I or I <sub>3</sub> <sup>5</sup>	I <sup>6</sup> or I <sub>3</sub> <sup>6</sup>	I <sub>4</sub> <sup>6</sup>

- Write major, minor, augmented, or diminished triads in root position on C, B, or Eb .
- Write or identify major, minor or perfect intervals above a given note.
- Write counts for rhythms involving 16<sup>th</sup> notes, syncopations and triplets.
- List the four musical style periods in chronological order.
- Match terms and signs to their definitions.
- Match an ornament (trill, turn, mordent, appoggiatura) to the correct realization.
- Identify binary, ternary, or rounded binary forms in a musical example.
- Score analysis: Questions will involve concepts from this and earlier levels.

## Aural Training/Listening Skills

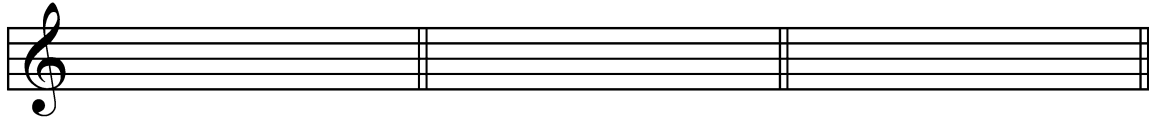
- Interval identification: M2, m2, M3, m3, P4, P5, M6, m6, M7, m7, P8. Each will be played broken and solid.
- Identify the quality of root position triads as major, minor, augmented, or diminished.
- Identify the meter of a piece as 5/4, 3/4, or 4/4.
- Identify an ornament in a short musical example as a mordent, or short trill.



**Triads**

\_\_\_\_ (6 pts.)

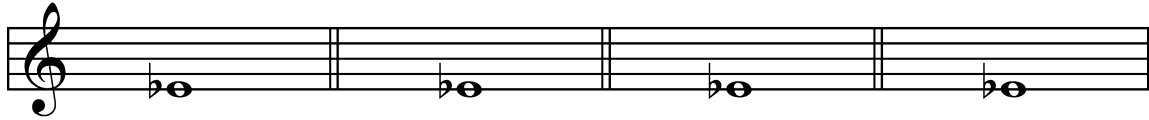
1. Write a tonic triad in all three positions in the key of D major. Label each one with Roman numerals and figured bass.



\_\_\_\_\_

2. Write the indicated triads above the given note.

\_\_\_\_ (4 pts.)



major

minor

diminished

augmented

**Ornaments**

Match each ornament with its correct realization.

\_\_\_\_ (4 pts.)

a.

b.

c.

d.

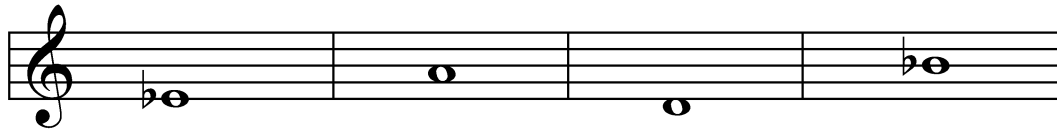


\_\_\_\_\_

**Intervals**

\_\_\_\_ (4 pts.)

Write the correct interval above each given note.



minor 7th

Major 6<sup>th</sup>

minor 3rd

Perfect 5<sup>th</sup>**Matching**

\_\_\_\_ (11 pts.)

\_\_\_ con brio

a. very slow

\_\_\_ con moto

b. a pattern that is continuously repeated, often in the bass

\_\_\_ largo

c. brisk, lively

\_\_\_ ostinato

d. lowers the pitch a whole step

\_\_\_ tranquillo.

e. with brilliance

\_\_\_ rondo

f. in a calm, quiet manner

\_\_\_ enharmonic

g. raises the pitch a whole step

\_\_\_ articulation

h. with motion

\_\_\_ double flat

i. refers to 2 notes sounding the same, but written differently

\_\_\_ double sharp

j. the various ways in which notes are executed, such as legato or staccato

\_\_\_ vivo

k. a form in music using a recurring theme alternating with one or more other themes (i.e. ABACA...)

**Score Analysis**

\_\_\_\_ (11 pts.)

Answer the following questions about the music on the next page.

1. Name the key and mode (major or minor). \_\_\_\_\_
2. The cadence in measure 4 is an example of which type of cadence?  
\_\_\_ authentic      \_\_\_ half      \_\_\_ plagal
3. What is the name of the ornament in measure 2? \_\_\_\_\_
4. What is the name of the ornament in measure 4? \_\_\_\_\_
5. What is the *root* of the circled chord in measure 5? \_\_\_\_\_
6. Identify the chord function of the circled chord in measure 5:  
\_\_\_ tonic      \_\_\_ subdominant      \_\_\_ dominant
7. The phrases in measures 1 - 4 and 5 - 8 are:  
\_\_\_ parallel      \_\_\_ contrasting
8. The cadence in measures 7-8 is an example of which type of cadence?  
\_\_\_ authentic      \_\_\_ half      \_\_\_ plagal
9. Identify the circled interval in measure 24 by size and quality  
(major/minor/Perfect). \_\_\_\_\_
10. Locate measures where measures 1 - 4 are repeated. \_\_\_\_\_
11. The form of this piece is:  
\_\_\_ ternary      \_\_\_ binary      \_\_\_ rounded binary      \_\_\_ rondo

59 Possible points

\_\_\_\_ Student points

# Menuet

Haydn

Measures 1-4 of the Minuet. The piece is in 3/4 time. Measure 1 starts with a treble clef and a key signature of one sharp (F#). The melody in the treble clef consists of quarter notes: G4, A4, B4, C5, B4, A4, G4. The bass clef accompaniment consists of quarter notes: G3, B2, G3, B2, G3, B2, G3. Measure 2 continues the melody: A4, B4, C5, B4, A4, G4. Bass clef: A2, C3, A2, C3, A2, C3. Measure 3: B4, C5, B4, A4, G4. Bass clef: B2, D3, B2, D3, B2, D3. Measure 4: A4, G4, F#4. Bass clef: A2, G2, F#2. A trill (tr) is indicated above the final note of the treble staff.

Measures 5-8 of the Minuet. Measure 5: Treble clef: G4, A4, B4, C5, B4, A4, G4. Bass clef: G3, B2, G3, B2, G3, B2, G3. Measure 6: Treble clef: A4, B4, C5, B4, A4, G4. Bass clef: A2, C3, A2, C3, A2, C3. Measure 7: Treble clef: B4, C5, B4, A4, G4. Bass clef: B2, D3, B2, D3, B2, D3. Measure 8: Treble clef: A4, G4, F#4. Bass clef: A2, G2, F#2. A trill (tr) is indicated above the final note of the treble staff. A circled triplet of eighth notes (G4, A4, B4) is shown in the bass clef of measure 5.

Measures 9-12 of the Minuet. Measure 9: Treble clef: G4, A4, B4, C5, B4, A4, G4. Bass clef: G3, B2, G3, B2, G3, B2, G3. Measure 10: Treble clef: A4, B4, C5, B4, A4, G4. Bass clef: A2, C3, A2, C3, A2, C3. Measure 11: Treble clef: B4, C5, B4, A4, G4. Bass clef: B2, D3, B2, D3, B2, D3. Measure 12: Treble clef: A4, G4, F#4. Bass clef: A2, G2, F#2. A trill (tr) is indicated above the final note of the treble staff.

Measures 13-16 of the Minuet. Measure 13: Treble clef: G4, A4, B4, C5, B4, A4, G4. Bass clef: G3, B2, G3, B2, G3, B2, G3. Measure 14: Treble clef: A4, B4, C5, B4, A4, G4. Bass clef: A2, C3, A2, C3, A2, C3. Measure 15: Treble clef: B4, C5, B4, A4, G4. Bass clef: B2, D3, B2, D3, B2, D3. Measure 16: Treble clef: A4, G4, F#4. Bass clef: A2, G2, F#2. A trill (tr) is indicated above the final note of the treble staff.

Measures 17-21 of the Minuet. Measure 17: Treble clef: G4, A4, B4, C5, B4, A4, G4. Bass clef: G3, B2, G3, B2, G3, B2, G3. Measure 18: Treble clef: A4, B4, C5, B4, A4, G4. Bass clef: A2, C3, A2, C3, A2, C3. Measure 19: Treble clef: B4, C5, B4, A4, G4. Bass clef: B2, D3, B2, D3, B2, D3. Measure 20: Treble clef: A4, G4, F#4. Bass clef: A2, G2, F#2. A trill (tr) is indicated above the final note of the treble staff. Measure 21: Treble clef: G4, A4, B4, C5, B4, A4, G4. Bass clef: G3, B2, G3, B2, G3, B2, G3.

Measures 22-26 of the Minuet. Measure 22: Treble clef: G4, A4, B4, C5, B4, A4, G4. Bass clef: G3, B2, G3, B2, G3, B2, G3. Measure 23: Treble clef: A4, B4, C5, B4, A4, G4. Bass clef: A2, C3, A2, C3, A2, C3. Measure 24: Treble clef: B4, C5, B4, A4, G4. Bass clef: B2, D3, B2, D3, B2, D3. Measure 25: Treble clef: A4, G4, F#4. Bass clef: A2, G2, F#2. A trill (tr) is indicated above the final note of the treble staff. A circled triplet of eighth notes (G4, A4, B4) is shown in the bass clef of measure 24. Measure 26: Treble clef: G4, A4, B4, C5, B4, A4, G4. Bass clef: G3, B2, G3, B2, G3, B2, G3.